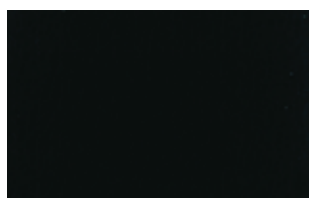
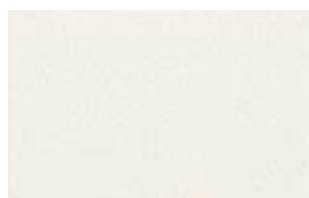


## Pelle - Nuvola Penelopeoggi (categoria C ) *Leather (C category)*



101 nero  
*black*



117 neve  
*snow*



140 cioccolato  
*chocolate brown*



157 minio  
*minio orange*



158 camelia  
*camelia*



182 bambù  
*bamboo green*



186 ciliegia  
*cherry red*



208 zabaione  
*zabaglione*



220 bouganville  
*bouganville*

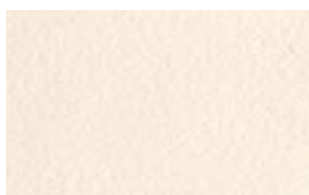


223 viola  
*purple*

## Tessuto Lavalà (categoria A) *Lavalà fabric (A category)*



F264/01 bianco  
*white*



F264/02 avorio  
*ivory*



F264/08 giallo  
*yellow*



F264/09 arancione  
*orange*



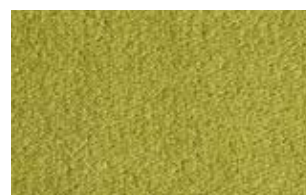
F264/10 rosso  
*red*



F264/11 bordeaux  
*bordeaux*



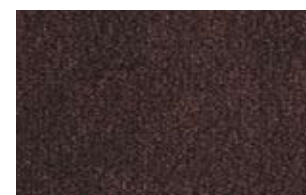
F264/12 violetto  
*violet*



F264/15 verde  
*green*



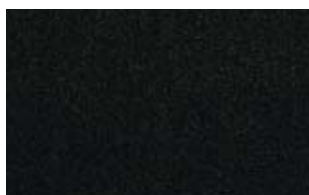
F264/23 blu scuro  
*dark blue*



F264/27 testa di moro  
*dark brown*

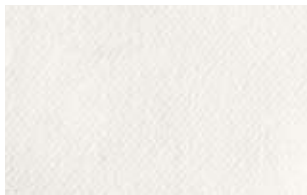


F264/29 grigio scuro  
*dark grey*

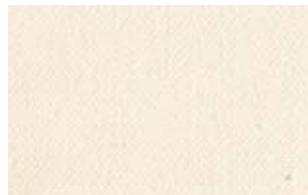


F264/30 nero  
*black*

## Tessuto Drill (categoria A) *Drill fabric (A category)*



F033/01 bianco  
*white*



F033/02 avorio  
*ivory*



F033/07 arancione  
*orange*



F033/09 rosso  
*red*



F033/13 bouganville  
*bouganville*



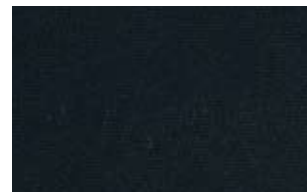
F033/21 blu  
*blue*



F033/22 viola  
*purple*



F033/30 testa di moro  
*dark brown*



F033/31 nero  
*black*

## Tessuti fantasia (categoria A) *Patterned fabric (A category)*



Erika 01 bianco  
*white*



Erika 06 giallo ocre  
*yellow*



Erika 13 bordeaux  
*bordeaux*



Erika 15 viola  
*violet*



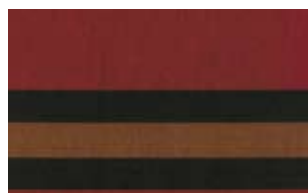
Erika 27 marrone  
*brown*



Erika D7/90



F385/03



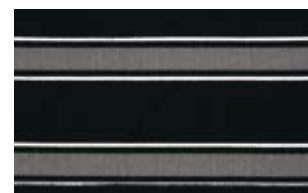
F385/06



F385/07



A 468/05



Erika 90